



Learn about churches

A series of 3 lessons for online learning

Session 1: Exploring a church

Pupils will write a list of 5 typical features found in churches.

They will learn a few facts about each then use an online tour to find them inside a church.

Finally they will choose one feature to describe and draw.

Session 2: Comparing churches

Using their earlier checklist pupils will explore a second church.

They will compare their chosen object from session 1 and list similarities and differences.

Lastly they will identify 5 things that both churches have in common.

Session 3: The layout of a church

Pupils will copy (or print) the simple floor plan of the first church.

Revisiting the online tour, they will mark compass points and the location of the 5 key features on the plan.

To finish they can annotate the plan with further information or additional features of their choice.



Learn about churches

Session 1

Exploring a church

Many churches have been standing for centuries and have welcomed thousands of visitors through their doors.

This is your chance to explore two of these amazing buildings from the comfort of your own home!

Copy this checklist so you can tick off each item when you've found it.

font

lectern

pulpit

altar

cross

When you've found all five, choose one to describe and draw.

First look at the five fact sheets to find out more information then set off to explore All Saints Church in Cambridge!

Here is the link to All Saints'. Use the mouse and the arrow keys to move around and take a closer look. You may need to turn all the way round to look behind you!

<https://artsandculture.google.com/streetview/all-saints-church-cambridge/NgHnRwntwUq9Ow?sv lng=0.1233110697231379&sv lat=52.20816744991782&sv h=300.02&sv p=0&sv pid=iwy7WO2RjqYAAARAtEaWAA&sv z=1>



Learn about churches

Session 2

Comparing churches

The first church you visited, All Saints Church in Cambridge, was built in Victorian times, between 1869 and 1871.

Now you are going to explore the much older Church of St Mary the Virgin in the village of Edlesborough in Buckinghamshire. The oldest parts of this church were started in the 13th century and there have been additions made to the building throughout its history

Look back at your list from Session 1 and see if you can find the same five features in St Mary's.

Then look more closely at the feature you chose to describe last time. You are going to compare the two versions of the same object.

You might think about the design, the material and the position of the object. Write down some of the similarities and differences. How many can you find?

Now can you list 5 things that are the same about the two churches.

Here is the link to All Saints'. Use the mouse and the arrow keys to move around and take a closer look. You may need to turn all the way round to look behind you!

<https://artsandculture.google.com/streetview/all-saints-church-cambridge/NgHnRwntwUq9Ow?sv lng=0.1233110697231379&sv lat=52.20816744991782&sv h=300.02&sv p=0&sv pid=iwy7WO2RjqYAAARAtEaWAA&sv z=1>



Learn about churches

Session 3

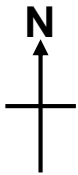
The layout of a church

Now you are getting familiar with the inside of a church you are going to revisit All Saints Church in Cambridge.

This time you are going to make a plan of the church

Carefully make a copy of the plan (or print it).

Draw a compass and mark North, East, South and West



Now mark the location of the 5 features you have been learning about.

font

lectern

pulpit

altar

cross

You can decide whether to use drawings, words, or make a key.
Include anything else that you think looks interesting on your plan.

Here is the link to All Saints again.

<https://artsandculture.google.com/streetview/all-saints-church-cambridge/NgHnRwntwUq9Ow?sv lng=0.1233110697231379&sv lat=52.20816744991782&sv h=300.02&sv p=0&sv pid=iwy7WO2RjqYAAARAtEaWAA&sv z=1>



Learn about churches

Find out more

If you'd like to explore some more churches follow this link and scroll to the bottom of the page to find museum views.

<https://artsandculture.google.com/partner/the-churches-conservation-trust>

4 museum views



EXPLORE

St Mary's Church, Edlesborough



EXPLORE

St Nicholas' Chapel, King's Lynn



EXPLORE

All Saints' Church, Cambridge



EXPLORE

St Lawrence's Church, Broughton

Enjoy exploring!