



THE CHURCHES CONSERVATION TRUST

89 Fleet Street · London EC4Y 1DH

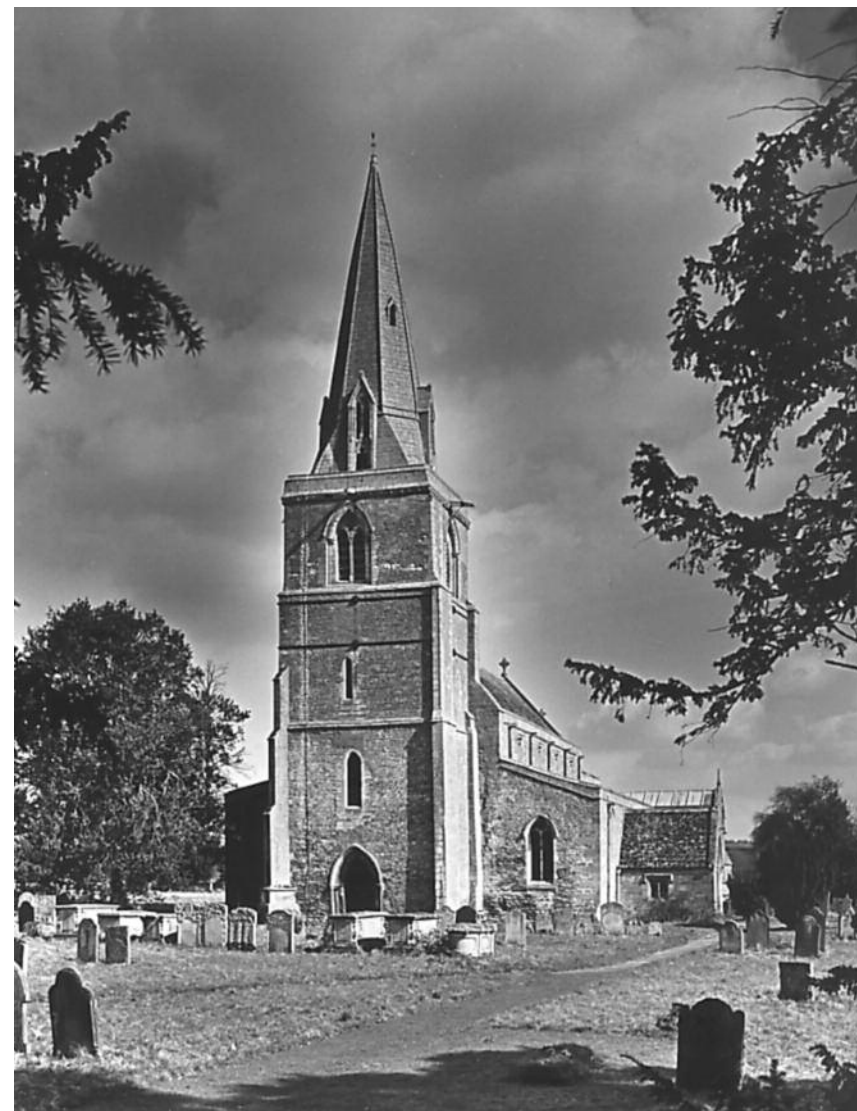
Registered Charity No. 258612

PRICE: £1.00



ST PETER'S CHURCH

DEENE
NORTHAMPTONSHIRE





THE CHURCHES CONSERVATION
TRUST WELCOMES YOU TO
ST PETER'S CHURCH,
DEENE, NORTHAMPTONSHIRE

Many years ago Christians built and set apart this place for prayer. They made their church beautiful with their skill and craftsmanship. Here they have met for worship, for children to be baptised, for couples to be married and for the dead to be brought for burial. If you have time, enjoy the history, the peace and the holiness here. Please use the prayer card and, if you like it, you are welcome to take a folded copy with you.

Although services are no longer regularly held here, this church remains consecrated; inspiring, teaching and ministering through its beauty and atmosphere. It is one of 300 churches throughout England cared for by The Churches Conservation Trust. The Trust was created in 1969 and was, until 1994, known as the Redundant Churches Fund. Its object is to ensure that all these churches are kept in repair and cared for, in the interests of the Church and Nation, for present and future generations.

Please help us to care for this church. There is a box for donations or, if you prefer to send a gift, it will be gratefully received at the Trust's headquarters at 89 Fleet Street, London EC4Y 1DH (Registered Charity No. 258612).

We hope that you will enjoy your visit and be encouraged to see our other churches. Some are in towns; some in remote country districts. Some are easy and others hard to find but all are worth the effort.

Nearby are the Trust churches of:

ALDWINCLE, ALL SAINTS

2 miles north of Thrapston off A605

WAKERLY, ST JOHN THE BAPTIST

7 miles south-west of Stamford off A43

BLATHERWYCKE, HOLY TRINITY

9 miles south-west of Stamford off A43

ST PETER'S CHURCH

DEENE, NORTHAMPTONSHIRE

by ANTHONY BARNES

DEENE IS INESCAPABLY the Brudenell church. Sir Robert bought Deene Park in 1514. He and many of his descendants are commemorated in the chapel on the south side of the chancel. It was the widow of one of them, the Seventh Earl of Cardigan who led the Charge of the Light Brigade in the Crimean War, who entrusted the 1868–69 rebuilding of much of the church to Thomas Henry Wyatt (he had built the ballroom at Deene Park some years before); and the Seventh Earl's is the most splendid of the monuments in the south chapel.

The oldest part of the church is the west tower with its slightly later broach spire, one of the earliest recessed spires known. The lower part of the tower may be as early as the late 12th century, with modifications such as the fine west doorway in the 13th.

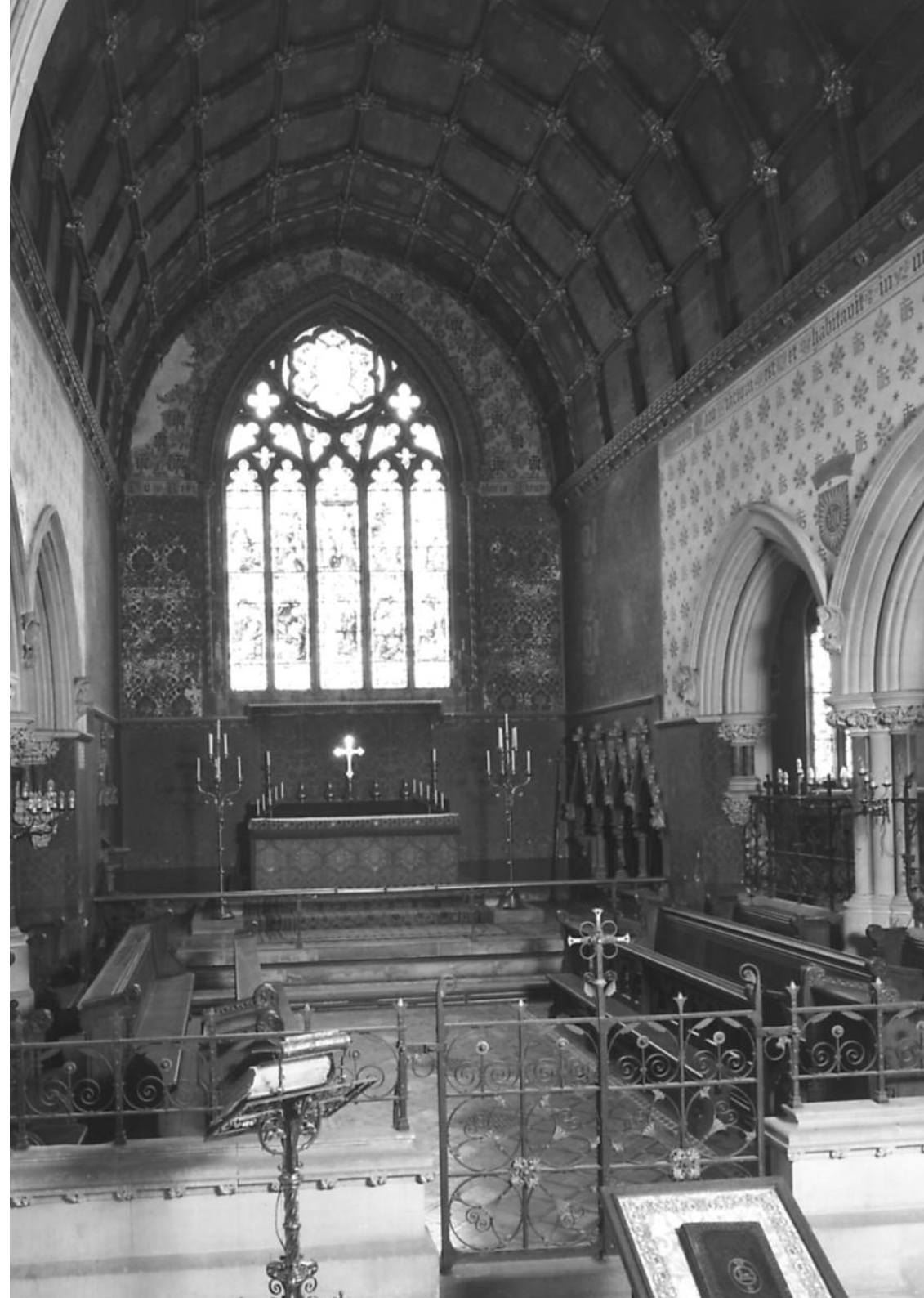
Most of the rest of the church took its present shape in 1868–69 but Wyatt seems to have used much of the stone and proportions of the 14th-century north and 15th-century south aisles. He lengthened the nave, built the chancel and added the organ chamber to the north and Brudenell chapel and porch to the south. His work, externally, looks its best from close to the edge of the large churchyard at the south-east. Constructed of local stone, with slates from Collyweston on the roof, it belongs to its surroundings.

ST PETER'S CHURCH

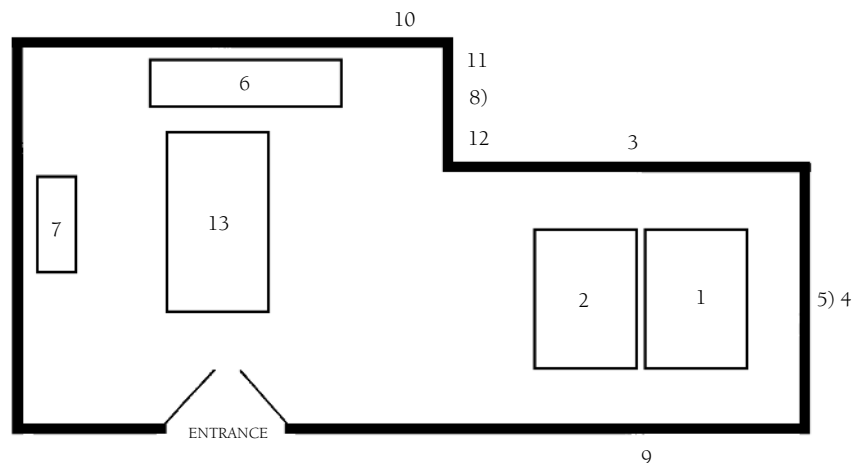
Inside, the nave is generous in its proportions. Carved heads on the corbels give way in the chancel to much more elaborate sculpture and, together with G.F. Bodley's 1890 decorations, to even greater riches in the sanctuary. The tiles are by Maw, the glass in the east window by Lavers, Barraud and Westlake, the organ case by Bodley.

In the tower are six bells:

- | | |
|--------|-----------------------------------------------------------|
| Treble | Taylor of Loughborough, 1951 |
| 2nd | W. and J. Taylor of Oxford, 1832 |
| 3rd | Newcombe of Leicester, 16th century |
| 4th | Taylor of Loughborough, 1862 |
| 5th | 1949 recasting by Taylor of a 16th century Leicester bell |
| Tenor | Tobie Norris 1 of Stamford, 1615. 10¼ cwt. |



To the west of the south door are two small memorials by David Kindersley and to the east is an unusual memorial to Bodley's patron, incorporating a crucifix. The earlier Brudenell memorials are in the south chapel, many having been moved during the 1868–69 work:



1. Sir Robert Brudenell (*d.*1531) and his wives, Margaret Entwissell and Philippa Power.
2. Brass to Sir Thomas Brudenell (*d.*1594) and his wife, Elizabeth Fitzwilliam.
3. Brass to Sir Edmund Brudenell (*d.*1584), his wives Agnes Bussy and Etheldreda Fernelay and his daughter, also Etheldreda, who married Sir Basil Brooke.
4. Arch to John Brudenell (*d.*1606) and within it
5. Brass to his father Sir Thomas Brudenell (*d.*1587) and his wife, Anne Topcliffe.
6. Altar monument to Robert Brudenell (*d.*1599) and his wife Catherine Taylarde. Above it is a reredos dated 1635 which came originally from the Brudenell private chapel when the family was Roman Catholic.
7. Altar monument to Sir Thomas Brudenell (*d.*1663), the first Earl of

Cardigan and his wife Mary Tresham. This appears to be re-used material from an earlier, larger construction.

8. Arch to Edmund Brudenell (*d.*1652), second son of Sir Thomas, above.
9. Monument to Anne Brudenell, Duchess of Richmond, (*d.*1722). By Guelfi, *c.*1730. The terracotta model for the monument is in the Victoria and Albert Museum.
10. Tablet to James, Second Earl of Courtown (*d.*1810), whose wife Mary was grand-daughter to the Third Earl of Cardigan.
11. Monument by Siever to Penelope Anne Cooke (*d.*1826), wife of the Sixth Earl of Cardigan.
12. Monument to Robert, Sixth Earl of Cardigan (*d.*1837).
13. Monument by Sir J.E. Boehm to the Seventh Earl of Cardigan (*d.*1868) and his second wife, Agnes de Horsey (*d.*1915). He was famous for his role in the Charge of the Light Brigade and scenes from the Crimean War adorn the monument.

A large church for what is now a small parish, with other places of worship available and a heavy repair bill to face. St Peter's was made redundant in 1980 and vested in The Churches Conservation Trust in 1982. Repairs, especially to the spire and roofs have been carried out under the supervision of Mr Julian Limentani of Huntingdon.

Photographs by Christopher Dalton

Series 4 no. 24

Revised February 1996