

Historic churches in

Hampshire

Surrey

Sussex

marvel at the  
dazzling  
delights



THE CHURCHES  
CONSERVATION TRUST

# a glory of churches

The rolling downland of the south boasts some of the greatest churches in England. Explore them at your leisure. Stroll through a daisy-filled churchyard in summer, take a winter's walk to a lost chapel or hear an evening choir sing in a Tudor preaching house.



You can find our churches tucked away in green valleys, standing proud on hilltops or in the centre of busy towns. They all have a special story to tell and together they are a tribute to English faith, hope, art and ingenuity.

All the churches in this leaflet have been saved by The Churches Conservation Trust. The Trust is a charity that cares for more than 340 churches in England. This is one of 18 leaflets that highlight their history and treasures.

For more information on the other guides in this series, as well as interactive maps and downloadable information, see [visitchurches.org.uk/welcome](http://visitchurches.org.uk/welcome)



## a place of serenity

feel time stand still in the serenity of  
All Saints, Little Somborne





## Privett, Holy Trinity

Hampshire

1

**A Victorian jewel set in beautiful countryside**

- *A lavishly decorated, Medieval-style church*
- *Italian marble mosaic floors*

The spire of Holy Trinity soars high above the trees, visible for miles around in an idyllic corner of Hampshire. It is an extraordinary experience to find this great church in such a rural location.

Built in 1876–78, the church was funded by William Nicholson – a local benefactor and gin distiller – and designed by Gothic architect Sir Arthur Blomfield, later responsible for the Royal College of Music.

Blomfield used the best craftsmen of the day to produce magnificent stonework, mosaics and stained glass. The walls are made from warm-toned Ham Hill stone with bands of Bath stone. Marble mosaic floors run across the church and are particularly colourful in the chancel.

If you are lucky, you may hear the wonderful peal of eight bells ringing out – but at any time you can soak in the exquisite views all over Hampshire.

Merepond Lane, Privett, Alton GU34 3PE

→ 5m W of Petersfield off A272

Nearest railway station: Petersfield (4.7 miles)

🕒 *Open daily, 10am–3pm*



## Preston Park, St Peter

Sussex

2

**Painted treasures in a wonderful landscape**

- *Origins dating back to the 13th century*
- *Sumptuous 20th-century additions*

This simple square-towered church, built from flint rubble, is 800 years old. It stands in the beautiful landscaped park of Preston Manor. Now all looks serene but in 1906 St Peter's was damaged by fire and nearly lost its greatest treasures – its 14th-century wall paintings.

Today, the paintings stand out in reds and browns against the limewashed walls. Although fragments, you can pick out the nativity with a bowl-shaped crib and the infant Jesus. Clearer is the violent scene of Thomas Becket's murder in Canterbury – you can see William de Tracy plunge his sword into Becket's head and blood dripping from the hand of Becket's chaplain.

Sumptuous restoration brought the church new life after the fire, and today the walls, windows and floors around the altar glow with a gorgeous mix of pattern and colour.

Preston Drive, Brighton BN1 6SD

→ North Brighton, off A23, in Preston Drive behind Preston Manor

Nearest railway station: Preston Park (0.3 miles)

🕒 *Open daily, 11am–3pm*



3

### Hartley Wintney, St Mary

Hampshire

Hilltop 13th-century  
church with peaceful  
graveyard

Spend some time in St Mary's and you will be richly rewarded. Originally built by nuns, the church now consists of a 13th-century nave and chancel, while the transepts and flint tower are 19th-century additions. Highlights include the remains of 13th-century wall paintings, including one of St Christopher. Also search out the grave of Henry 'Hangman' Hawley, who defeated Bonny Prince Charlie at Culloden.

Church Lane, Hartley Wintney, Hook RG27 8EE

→ 8m E of Basingstoke off A30

Nearest railway station: Winchfield (0.8 miles)

🕒 *Open Easter to Sep, Sat and Sun, 2pm-4pm;  
at other times, keyholder nearby*



4

### Itchen Stoke, St Mary

Hampshire

A dazzling and colourful  
Victorian jewel

Built in 1866, St Mary's overwhelms the senses. Entering it is like stepping into a wonderland of pattern and colour.

The roof is richly painted, the font is inlaid with marble, and the tiles near the altar form a labyrinth pattern. Best of all is the stained glass, especially in the west window (detailed on the front cover). Try to visit on a sunny day, when the church is bathed in gloriously coloured light. Two memorial brasses remain from the previous Medieval church.

Itchen Stoke, Alresford SO24 0QU

→ 6m E of Winchester on B3047

Nearest railway station: Winchester (5.3 miles)

🕒 *Open daily, 10am-4pm*

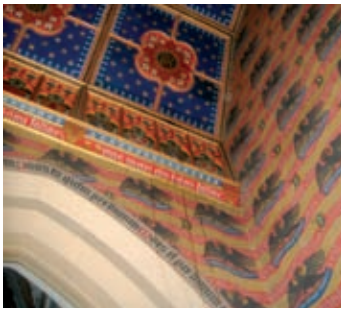


11

## harmony and history

discover the wonderfully unspoilt and  
harmonious 18th-century interior of  
The Holy Sepulchre, Warminghurst



**5**

### Albury, St Peter & St Paul Surrey

**A Saxon church in a lovely parkland setting**

This church is a flint-walled gem, set amongst the trees of Albury Park. Inside, you'll find a light, limewashed interior with a stunning Medieval wall painting of St Christopher sporting a curly red beard. Another highlight is the South Chapel – this was remodelled by renowned Victorian architect AW Pugin. He used his signature colourful style here to create a dazzling mortuary chapel for Albury Park's Drummond family.

Albury Park, Albury, Guildford GU5 5BB

→ 5m SE of Guildford off A248,

1m W of its junction with the A25

Nearest railway station: Chilworth (3 miles)

🕒 *Open daily, 10am-5pm*

**7**

### Chichester, St John the Evangelist Sussex

**A rare Georgian preaching house**

Built in 1812 by a group of Church of England evangelists, St John's was designed for sermons and scripture reading rather than communion. The church is arranged rather like a theatre, with a triple-decker pulpit taking centre stage. As the chapel was not a parish church, ministers were largely paid by the income from renting seats in the church. Pews in the upper gallery, where the rich sat, still have their own hire numbers.

St John's Street, Chichester PO19 1UR

→ St John's Street, SE quadrant of Chichester

Nearest railway station: Chichester (0.5 miles)

🕒 *Open daily, 10am-4pm*

**6**

### Cheam, Lumley Chapel Surrey

**Tiny treasure full of remarkable carvings**

Lumley Chapel, the oldest building in Cheam, can be found in St Dunstan's churchyard. John Lumley, a Catholic aristocrat and art collector, refurbished the building as the burial place for himself and his two wives in the late 16th century. Opulent stone monuments fill the walls and a huge tomb near the door shows Lumley's first wife Jane Fitzalan, carved in alabaster, her gown flowing as she kneels in prayer.

Church Road, Cheam, Sutton SM3 8QH

→ In churchyard of St Dunstan's Church on Cheam High Street

Nearest railway station: Cheam (0.3 miles)

🕒 *Keyholder nearby (except Mon or Tue afternoon)*

**8**

### Hove, St Andrew Sussex

**A showpiece for a fashionable seaside town**

St Andrew's was built in the 1820s to serve the wealthy society moving into the old fishing towns of Brighton and Hove. The grandeur of the church perfectly matches the neighbouring squares and terraces. Inside, light streams through skylights and stained glass. A painted ceiling from the 1920s shows the sun with a crescent moon, a comet, Saturn and stars.

Waterloo Street, Hove BN3 1AQ

→ Waterloo Street, just off seafront near Brunswick Square  
Nearest railway station: Brighton (1 mile)

🕒 *Open Sun, 2pm-4pm; at other times by appointment on 07973 227774*



9

### North Stoke, St Mary the Virgin

Sussex

**A happy ending for a church with no name**

On the South Downs above the river Arun, this Medieval church has a peaceful atmosphere that evokes centuries of prayer. It is simply furnished, with decorative stone carvings of heads, foliage, a sheep and a little hand. Until recently, the church was known as North Stoke Church. But in 2007, a letter dated 1275 from a bishop to King Edward I was discovered in the archives at Kew – it named the church as St Mary.

North Stoke, Arundel BN18 9LS

→ 5m N of Arundel off B2139

Nearest railway station: Amberley (1 mile)

🕒 *Open daily, 10am-4pm*



11

### Warminghurst, The Holy Sepulchre

Sussex

**A country gem from a gentler era**

The setting of this 13th-century church – overlooked by an Iron Age hill fort on the South Downs – is lovely enough to warrant a day out, but the building itself surpasses all expectations. The unspoilt 18th-century interior includes silvery oak pews, an uneven flagstone floor, and a curved brace roof. There are lovely local memorials and a sweetly arched wooden screen. Look for the clerk's chair – it suggests that one of the old parish officials was very well fed.

Church Park Lane, Warminghurst, Ashington RH20 3AW

→ Northern end of main street in Ashington village off A24

Nearest railway station: Pulborough (5 miles)

🕒 *Usually open daily, 10am-4pm; at other times keyholder nearby*



10

### Tortington, St Mary Magdalene

Sussex

**Boggle-eyed monsters in a rustic church**

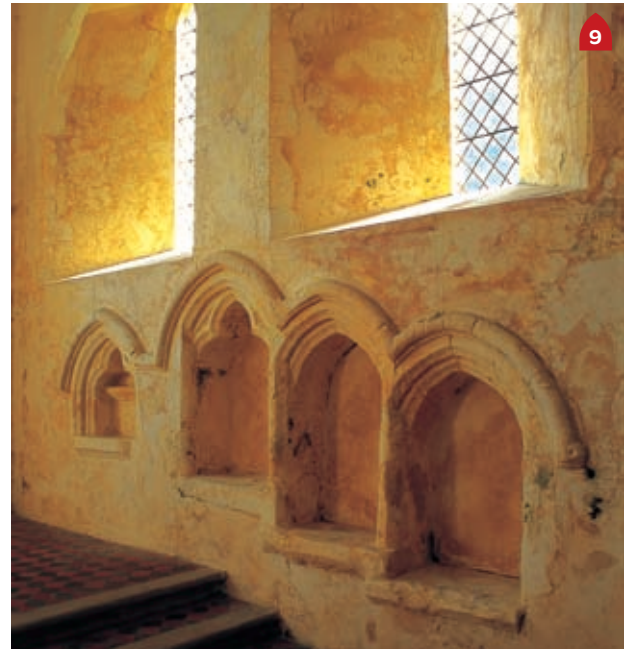
The entrance to this 12th-century flint church looks like something out of a Medieval fantasy – three rows of Norman carvings arch over a thick wooden door, set with ornamental hinge straps. Inside, strange creatures glare from the chancel arch. They are called beakheads – boggle-eyed monsters with beaks, tongues and squid-like tentacles. Once they would have been brightly painted to entertain – or terrify – worshippers.

Ford Road, Tortington, Arundel BN18 0FD

→ Next to Tortington Farm off Arundel to Littlehampton minor road

Nearest railway station: Ford (1 mile)

🕒 *Open daily, 10am-4pm*



9

# More churches to enjoy

Each CCT church has been saved because it is special. We can't do justice to them all in one leaflet, so visit our website for more information on those only briefly described here.

## Hampshire

### Ashley, St Mary

12

This church, set prettily amongst trees, was probably built to serve a Norman castle whose moat still cuts through the churchyard. Interesting features include a 13th-century wall painting and a 17th-century alms box cut out of an oak post.

Ashley, Kings Somborne, Stockbridge SO20 6RJ  
→ 4m SE of Stockbridge off A3057

🕒 *Open daily*

---

### Colemore, St Peter ad Vincula

13

This rural upland church, dating from the 12th century, still retains its charm – even though it has been rebuilt several times. Its treasures include a 12th-century Purbeck marble font and a 16th-century wooden screen.

Colemore, Alton GU34 3RX  
→ 6m S of Alton off A32

🕒 *Open daily*

---

### Freefolk, St Nicholas

14

A simple 13th-century church, with a pretty bell turret. It has windows and a chancel screen from the 15th century and a colourful, intricately carved monument to Sir Richard Powlett, who died in 1614.

Freefolk, Laverstoke, Whitchurch RG28 7NW  
→ Off B3400 in Laverstoke, 3m E of Whitchurch  
Nearest station: Whitchurch (3 miles)

🕒 *Open daily*

---

### Little Somborne, All Saints

15

Set in a downland valley, this picturesque church was built in Saxon times. The Normans subsequently replaced the chancel and extended the nave. Sir Thomas Sopwith, the pioneer aviator, was buried here in 1989.

Somborne Park Road, Little Somborne,  
→ Stockbridge SO20 6QT  
4m SE of Stockbridge off A3057

🕒 *Open daily*

---



### Preston Candover, St Mary the Virgin Old Church

16

A secluded chancel is all that left of this church after demolition of the rest in 1885. It sits in a lovely churchyard and has Medieval tiles and many memorials. A lancet window dates from its foundation around 1190.

Preston Candover, Basingstoke RG25 2EN  
→ Between New Alresford and Basingstoke on B3046

🕒 *Open daily*

---

### Upper Eldon, St John the Baptist

17

This simple but elegant 12th-century church stands in the private garden of Eldon House. The church has a rich history and has been saved from ruin several times – in the 19th century, it was used as a cowshed!

Upper Eldon, Kings Somborne, Stockbridge SO20 6QN  
→ 4m S of Stockbridge off A3057

🕒 *Open daily*

---

## Surrey

### Esher, St George

18

Charming Tudor church, built from a jumble of sandstone and brick. The interior has wonderful 18th-century furnishings, including a three-decker pulpit and a pew designed by the Blenheim Palace architect, John Vanbrugh.

Esher Park Avenue, Esher KT10 9PX  
→ Southern end of the High Street off A244

🕒 *Open most days; at other times keyholder nearby (not Sun)*

---

## Sussex

### Church Norton, St Wilfrid

19

This 13th-century chancel of a large Norman church has a fascinating mix of old and new – including some gloriously colourful 20th-century stained glass showing animals in a nearby nature reserve.

Rectory Lane, Selsey PO20 9TD  
→ 2m N of Selsey off B2145

🕒 *Open daily, 11am-4pm*

---



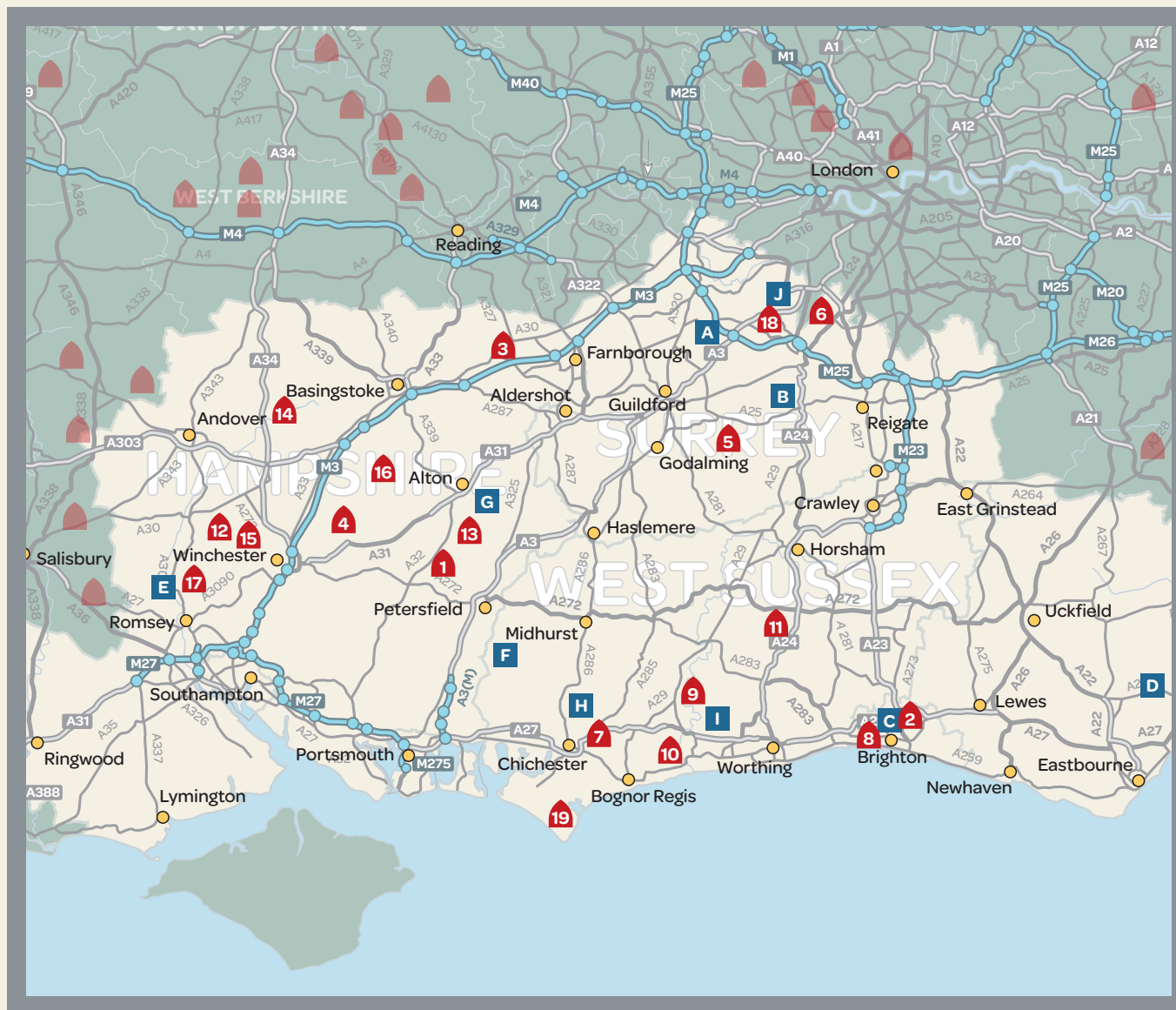
# Finding our churches

The map opposite shows the location of each of our churches in Hampshire, Surrey and Sussex, together with other nearby attractions and CCT churches in adjoining counties.

Our website, [visitchurches.org.uk](http://visitchurches.org.uk), has much more detailed information to help you plan your trip.




- 1** Privett, Holy Trinity
- 2** Preston Park, St Peter
- 3** Hartley Wintney, St Mary
- 4** Itchen Stoke, St Mary (cover image)
- 5** Albury, St Peter & St Paul
- 6** Cheam, Lumley Chapel
- 7** Chichester, St John the Evangelist
- 8** Hove, St Andrew
- 9** North Stoke, St Mary the Virgin
- 10** Tortington, St Mary Magdalene
- 11** Warminghurst, The Holy Sepulchre
- 12** Ashley, St Mary
- 13** Colemore, St Peter ad Vincula
- 14** Freefolk, St Nicholas
- 15** Little Somborne, All Saints
- 16** Preston Candover, St Mary the Virgin Old Church
- 17** Upper Eldon, St John the Baptist
- 18** Esher, St George
- 19** Church Norton, St Wilfrid

 CCT churches in neighbouring counties.  
For details, go to [visitchurches.org.uk](http://visitchurches.org.uk) or see the relevant county guide.



Reproduced by permission of Ordnance Survey © on behalf of The Controller of HMSO © Crown Copyright 2011

## Other local heritage attractions

- A** Wisley Gardens – Royal Horticultural Society
- B** Polesden Lacey – house, gardens 
- C** Royal Pavilion
- D** Battle of Hastings, and Battlefield Abbey 
- E** Mottisfont Abbey Gardens 
- F** Uppark – house, gardens 
- G** Jane Austen's House – museum
- H** Weald & Downland Open Air Museum
- I** Arundel Castle
- J** Claremont Gardens 

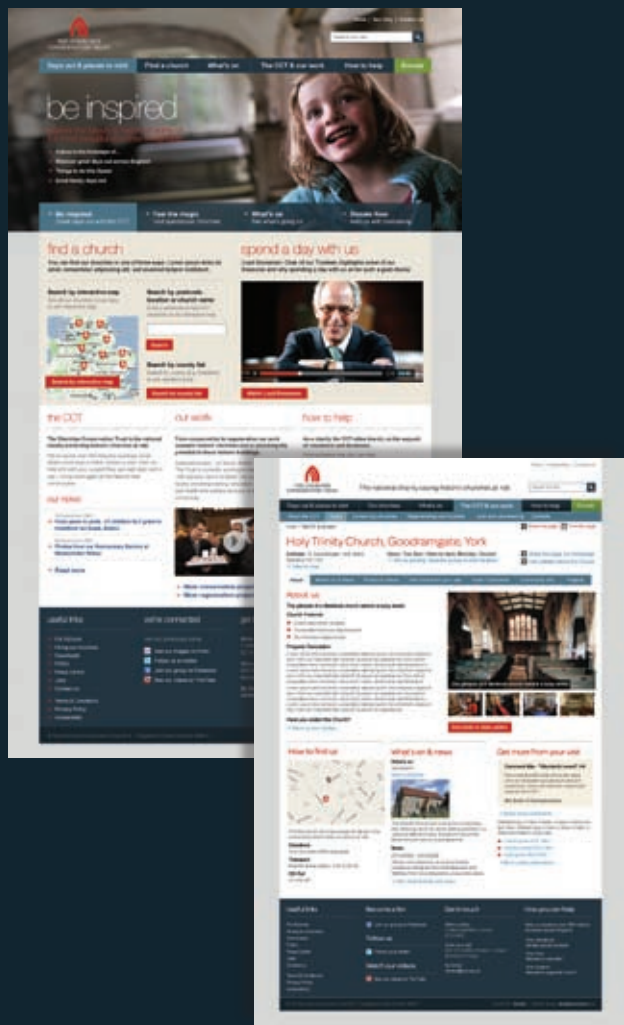


# Find out more

Our website has a host of additional information that will help you plan and enjoy your visit, including:

- Interactive maps
- Filterable lists of all our churches
- Up to date opening times
- Visitor comments
- Downloadable guides
- Image galleries
- Event listings

Go to [visitchurches.org.uk](http://visitchurches.org.uk) to access all this and more.



# Welcome to a thousand years of English history

The Churches Conservation Trust is the national charity protecting historic churches at risk.

We've saved over 340 beautiful buildings which attract more than 1.5 million visitors a year. With our help and with your support they are kept open and in use – living once again at the heart of their communities.

## Visiting information

Go to [visitchurches.org.uk](http://visitchurches.org.uk) for detailed directions, local maps, information on disability access and up to date opening times.

For other enquiries, call us on **020 7213 0660** (Monday – Friday, office hours), or email [welcome@tcct.org.uk](mailto:welcome@tcct.org.uk)

- ! Please take care when visiting our churches. Floors may be uneven/worn or slippery, and interior lighting may be low.
- 🦮 Assistance dogs are welcome.
- ♿ For full disabled access information, see our website.
- 🗺 Unsure about the 'keyholder nearby' access? You will find details at the church or call us in advance.
- P Parking is available at most churches – see the website for more details.
- 🚉 The closest station for each church is shown in the guide.
- 🚌 For bus routes, see [traveline.org.uk](http://traveline.org.uk)
- 🚲 Cyclists welcome! For cycle routes, go to [sustrans.org.uk](http://sustrans.org.uk)

## Help us save historic churches

The CCT needs to raise an additional £1.5million every year just to cover essential repairs. If you enjoy your visit please leave a donation at the church, or go to [visitchurches.org.uk/donate](http://visitchurches.org.uk/donate) for details of how you can help.



THE CHURCHES  
CONSERVATION TRUST

[visitchurches.org.uk](http://visitchurches.org.uk)

The Churches Conservation Trust  
1 West Smithfield, London EC1A 9EE  
Registered Charity No: 258612 © CCT 2011